

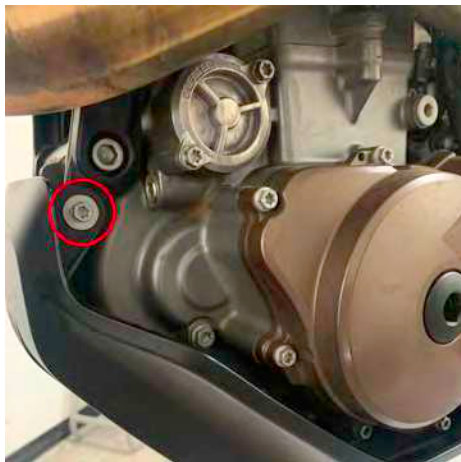
**Parts Included:**

- Skid Plate

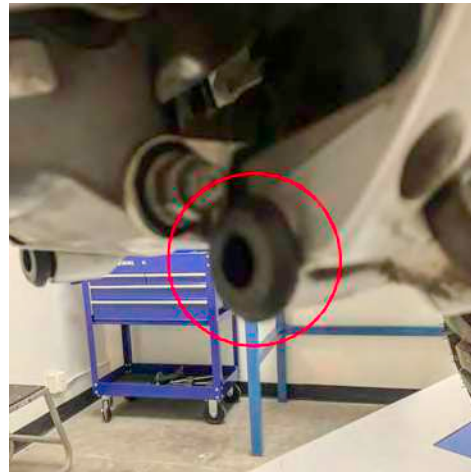
Hardware Included:

- M8 X 1.25 X 20mm Countersunk bolts (6)
- M10 X 1.5 X 180mm Cap head bolt (1)
- 10mm Washer (2)
- M10 X 1.5mm Nylock nut (1)
- Aluminum Rear Bracket (2)
- Steel Front Bracket (1)
- 19mm OD X 10.2mm ID X 25mm Spacers (2)

Remove the two 6mm bolts on the stock skid plate.



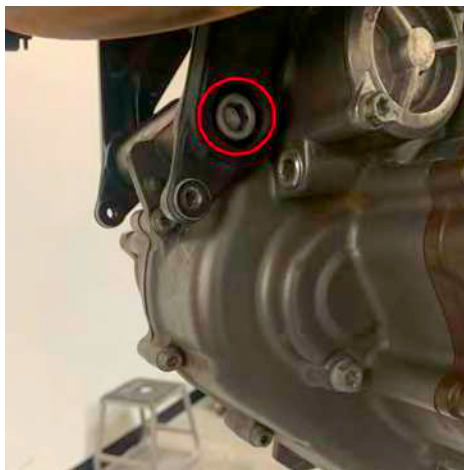
Slide the stock skid plate forward and remove. If the stock rubber grommets pull out of the frame, remove them off the skid plate mounting brackets and reinstall them in the frame.



Install the mounting brackets onto the skid plate using the supplied 8mm torx bolts and tighten using a torx bit or key. Make sure the round mounting pins are facing rearward.



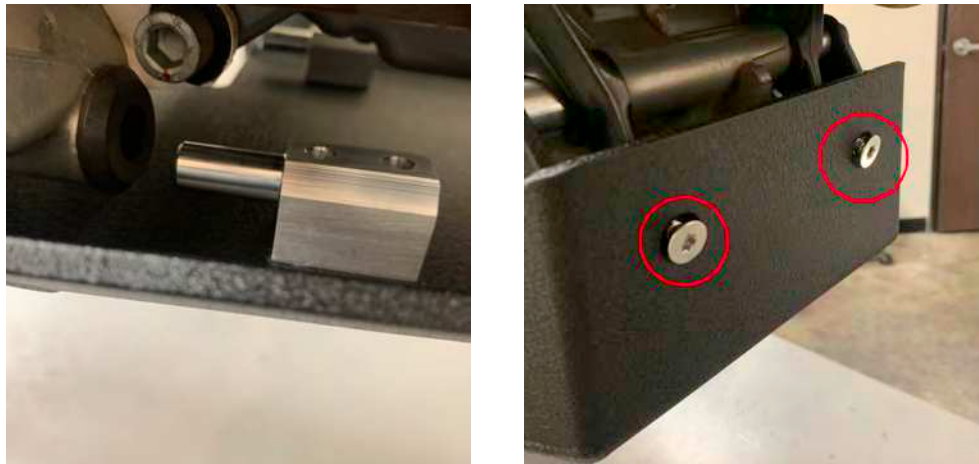
Remove the front motor mount bolt using a 10mm socket and 10mm allen socket or key.



Install the two spacers into the frame and mounting bracket using the supplied 10mm bolt, washer, and nut make hand tight at this time.



Slide the skid plate mounting bracket pins into the rubber grommets. Install the 8mm torx bolts by aligning the mounting holes on the skid plate and the engine mounted bracket. Tighten the two 8mm torx bolts using a T8 torx socket or torx key.



Tighten the skid plate engine mounting bracket using a 17mm socket and 10mm allen socket or key.

